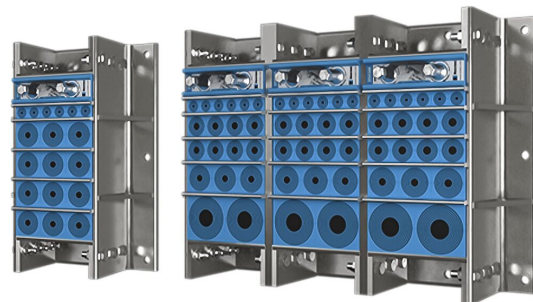




Passage Roxtec GKO

Passage avec un cadre à assembler pour différentes combinaisons.

Le Roxtec GKO est un passage composé d'un cadre ouvrable qui peut être assemblé de manière à former différentes tailles et différentes combinaisons, en fonction des besoins ou de la taille et de la forme d'une ouverture existante. Il est aussi idéal pour les rénovations autour des tuyauteries et des câbles existants. Le cadre se boulonne à la structure.



- Résistant aux rongeurs
- Idéal pour la rénovation
- Fournit une capacité de réserve intégrée

Caractéristiques du produit



Coupe-feu



IP/UL NEMA

Structure d'installation



Béton

Type de fixation



Boulonnage

Classements et certificats

Feu

- Classement E/EI selon EN 13501
- Classement F/T selon UL 1479

Étanchéité

- IP 66/67, IP 68

Éléments d'étanchéité

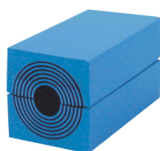
Éléments d'étanchéité



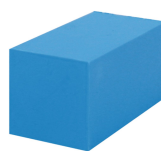
Lubrifiant Roxtec



Wedge et Wedgekit



Module RM avec Multidiameter™



Module de compensation plein RM



Plaque de maintien Roxtec



Outils de maintien Roxtec

Accessoires



Kit d'étanchéité Roxtec



Cadre GKO

Pour plus d'informations, veuillez consulter [roxtec.com](https://www.roxtec.com).



The product information provided by Roxtec does not release the purchaser of the Roxtec system, or part thereof, from the obligation to independently determine the suitability of the products for the intended process, installation and/or use.

Roxtec gives no guarantee for the Roxtec system or any part thereof and assumes no liability for any loss or damage whatsoever, whether direct, indirect, consequential, loss of profit or otherwise, occurred or caused by the Roxtec systems or installations containing components not manufactured by an authorized manufacturer and/or occurred or caused by the use of the Roxtec system in a manner or for an application other than for which the Roxtec system was designed or intended.

Roxtec expressly excludes any implied warranties of merchantability and fitness for a particular purpose and all other express or implied representations and warranties provided by statute or common law. User determines suitability of the Roxtec system for intended use and assumes all risk and liability in connection therewith. In no event shall Roxtec be liable for indirect, consequential, punitive, special, exemplary or incidental damages or losses.

The Roxtec products are offered and sold in accordance with the conditions of the Roxtec General Terms of Sales. The latest version of the Roxtec General Terms of Sales can be downloaded from <https://www.roxtec.com/en/about-us/about-roxtec/general-terms-of-sales/>

We reserve the right to make changes to the product and technical information without further notice. Any errors in print or entry are no claims for indemnity. The content of this publication is the property of Roxtec International AB and is protected by copyright.

This document was generated on: 2024-04-10